

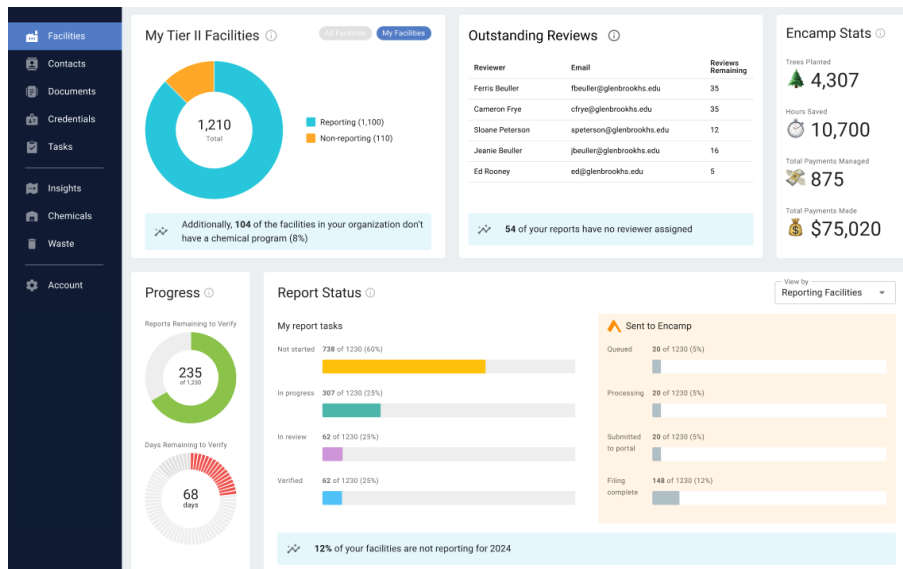
# Simplify your EPCRA Tier II/ SARA and HMBP compliance reporting

A walk through the Encamp platform showing how you can save 100s of hours automating reporting



**Modernize and streamline Tier II reporting to ensure regulatory compliance across your company’s entire operational footprint.**

**The Chemicals Overview Dashboard is the command center to monitor your organization’s progress toward Tier II report submittal.**



Encamp lets you easily manage your facility compliance data, tasks, reporting, submissions, fee payments and record keeping — in one place. By automatically checking reporting requirements across 33,000+ U.S. jurisdictions, Encamp is the only industry solution that automates EPCRA Tier II compliance reporting from start to finish.

**Our customers save hundreds, and sometimes thousands of hours each year, enabling them to spend more time on critical company initiatives like ESG and digital transformation projects.**



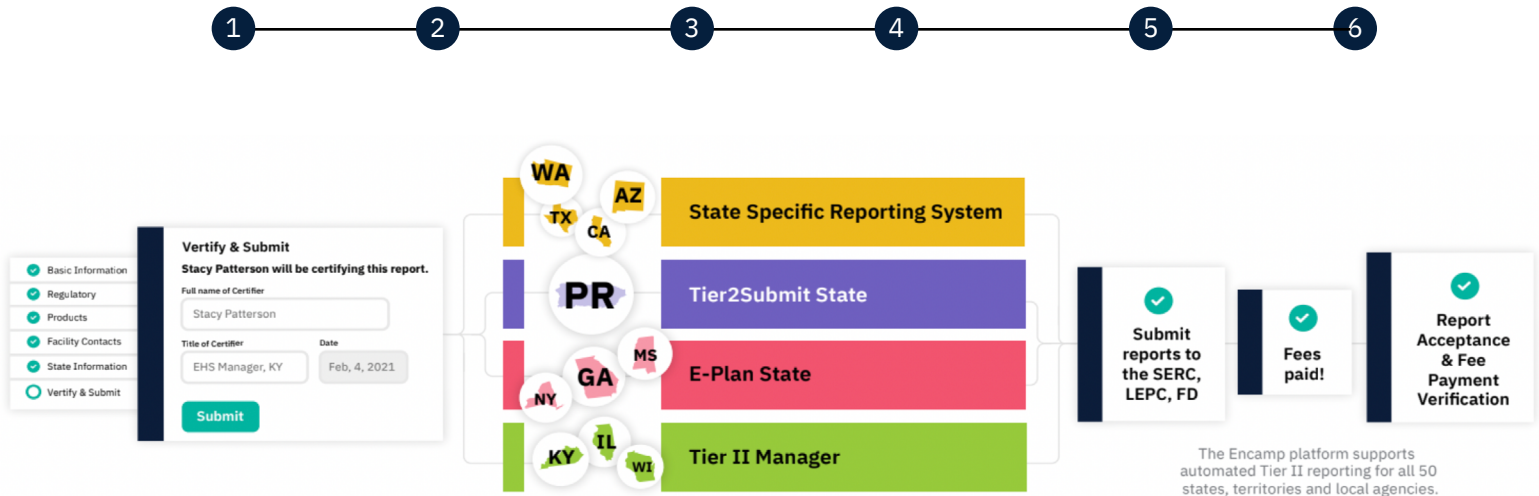
**“Your solution is unique in that it’s the only one in the industry that can automate data collection and standardize it, while automating the reporting, submissions and fee payments. It’s been a game-changer for us.”**

**Mason Baziw**, Sr. Manager of ESG and Sustainability, TopBuild

# HOW IT WORKS

## Fully Automated Reporting

We've built the logic to fully automate Tier II submissions and fee payments across states, territories, and local agencies. Hit submit, and the Encamp Fulfillment Engine takes care of the rest.



- 1 Import last years data directly into Encamp by connecting your state Tier II accounts or uploading T2S files.
- 2 Review and submit your report through Encamp's Tier II Reporting application.
- 3 The Encamp Fulfillment Engine is a proprietary solution we've developed to route reports to the right agencies based on the reporting facility's location.
- 4 Reports are automatically added to a workflow queue Encamp takes care of the rest to ensure reports are submitted to the proper SERC, LEPC and fire department.
- 5 Fee payments are submitted by Encamp Compliance Specialists on behalf your organization where applicable.
- 6 Easily track and manage Tier II report and fee payment verification within Encamp.

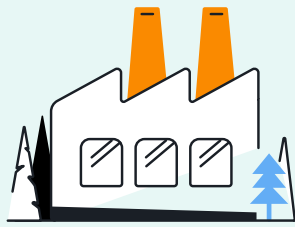
# HOW IT WORKS

## 4 Key Components

Support the industry's only last mile reporting solution, helping you simplify your reporting process, stay compliant and manage all fee payments and mailings.

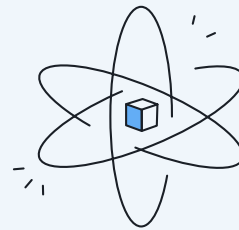
**Automatically check reporting requirements across 33,000+ jurisdictions in the U.S.**

### Phase 1



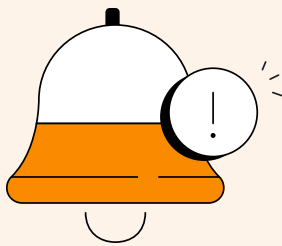
Establish Facility Foundations

### Phase 2



Establish Continuous Data Collection

### Phase 3



Automate Updates and Notifications

### Phase 4



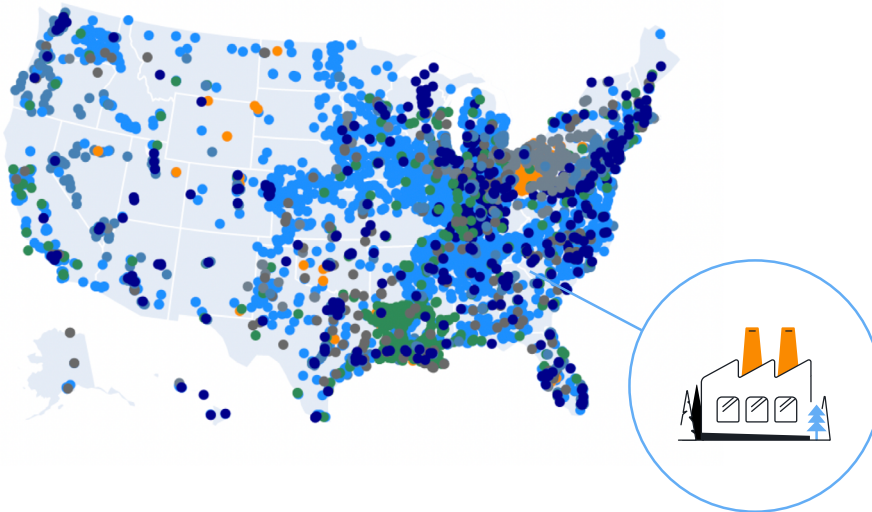
Automate Compliance Reporting

# HOW IT WORKS

## Phase 1

### Establish Your Facility Foundations

19,000+ actual Encamp customer facilities in the United States



This is your source of truth - as far as regulators are concerned. Easily catalog and review:

- Administrative site information
- Historical compliance data
- Site contacts
- Non-compliance events
- Generator status

## Start with a Strong Foundation

Encamp begins implementation by importing your entire US facility footprint into our application. We create a profile for each site to further enrich your data, centralizing your contacts, records, products, and credentials. During implementation, our experts will import your credentials and verify they are up to date before we begin importing last year's report.

The image below shows what you will see once you import your facility data into Encamp, including facility details like address, latitude/longitude, local emergency planning committee, and responding fire department.

Facility <sup>2</sup>	State <sup>1</sup>	Street Address
Alabaster AL, DGI (77)	AL	326 & 334 Dan Tibbs Rd NW, Huntsville, AL, 35806-3704
Birmingham, SP (1504)	AL	2800 2nd Ave S, Birmingham, AL, 35233-2811
Florence - Direct, SP (1501)	AL	1935 Mall Blvd, Auburn, AL, 36832-3600
Florence, SP (1518)	AL	2500 JORDAN RD SOUTH, FLORENCE, AL, 36601-3600
Huntsville, SP (1502)	AL	5371 Hamilton Blvd, Theodor...
Mobile AL, CI (7)	AL	3249 Moody Pkwy, Moody, AL, 36688-3600
Harrison AR, Ozark FI (571)	AR	3507 Country Circle, Harrison...
Little Rock, SP (1510)	AR	6901 Scott Hamilton Dr., Little...
Marion AR, CG (387)	AR	1139 State HWY 77, Marion, A...
Mountain Home AR, Ozark FI (572)	AR	2921 Hwy 5 S, Mountain Hom...
Sherwood AR, CIB (709)	AR	4300 Rixie Road, Sherwood, A...
Avondale AZ, GCS	AZ	1250 N Fairway Dr Ste A101, A...

**Physical Address**

Street Address  
326 & 334 Dan Tibbs Rd NW

Street Address 2

City  
Huntsville

State  
Alabama

Postal Code  
35806-3704

County  
Madison

Country  
United States

Latitude  
34.77823301440954

Longitude  
-86.66684102577476

# HOW IT WORKS

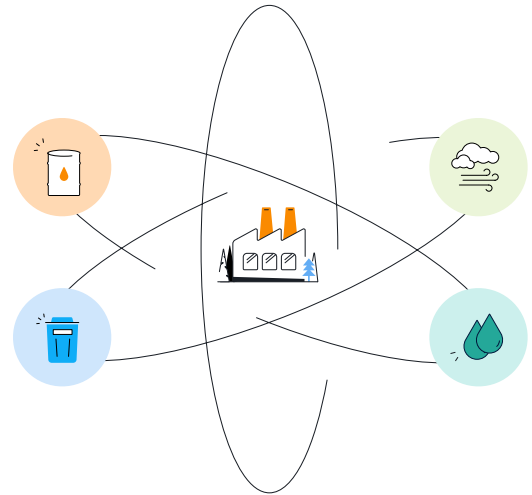
## Phase 2

## Establish Continuous Data Collection

- Chemical inventories
- SDS metadata

### On the horizon

- Hazardous waste production data
- Air emissions
- Water discharge



## Leverage your Historic Data

Once your facility foundation is created, Encamp's expert team will help add your state and local credentials to the platform. From there, our technology logs in to the state portals and brings in last year's report. This not only allows you to get started on this coming year's report faster, but it brings in historical facility data to help compare your data and keep it accurate.

In this image you can see what chemicals are stored on site, their quantities, and the inventory history.

**Chemical Summary**

Chemical	CAS #	Alt ID	Is EHS	Max Amt	Avg Amt	Over Thre...	Will R.	Issues
Benzyl Alcohol NF/FCC	0000100-...	BZALCFCC		500 lbs	500 lbs			
Diff Quick	n/a	130832	✓	1,000 lbs	1,000 lbs			
Gram Decolorizer	n/a			50,111 lbs	23,061.84 lb	✓		
Sharpie Markers	000-00-0			10,000 lbs	10,000 lbs	✓		

**Other Chemicals**

Name	CAS #	Alt ID	Max Amt	Measurements	Issues
Benzyl Alcohol NF/FCC	0000100-51-6	BZALCFCC	500 lbs	1	
Diff Quick	n/a	130832	1,000 lbs	1	
Gram Decolorizer	n/a		50,111 lbs	5	
Sharpie Markers	000-00-0		10,000 lbs	1	

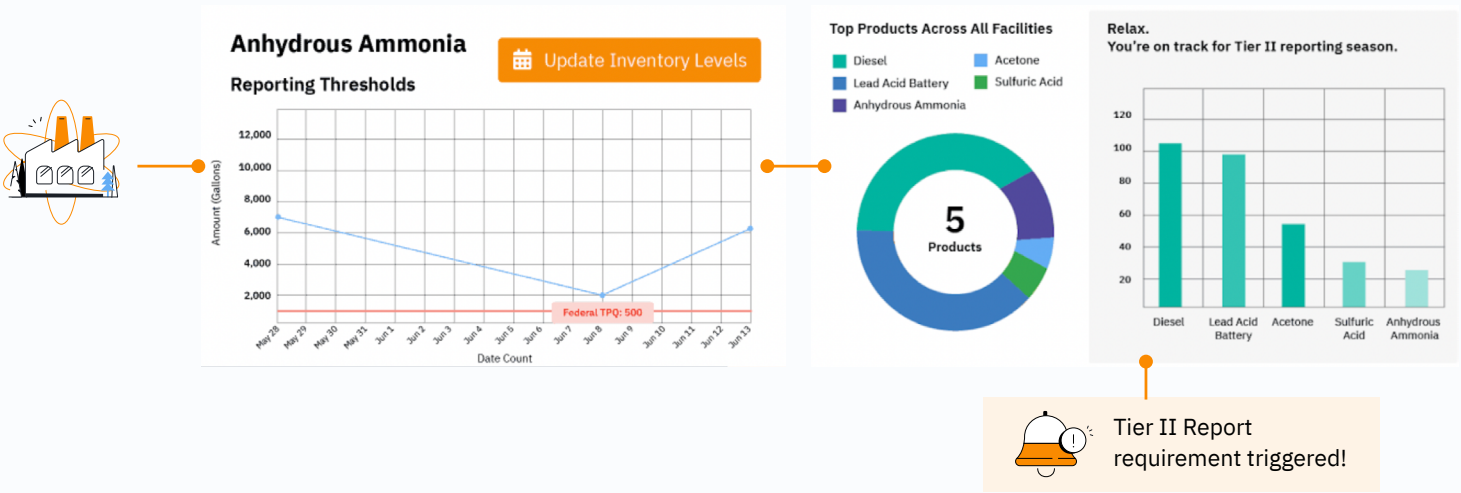
**Daily Measurements for Gram Decolorizer (n/a, Mixture)**

Storage Location	Measurement Date	Amount	Storage Type	Issues
West side tank	Jul 29, 2024	25,000 Pounds	Above ground tank	
West side tank	Nov 18, 2022 (carry-ov...	3,001 Pounds	Above ground tank	
west side tank	Jul 30, 2024	11,111 Pounds	Above ground tank	
west side tank	Jul 1, 2024	1,111 Pounds	Above ground tank	
a new tank location	Jul 31, 2024	14,000 Pounds	Outdoor storage pile	

# HOW IT WORKS

## Phase 3

## Automate Updates & Notifications



## Built in Thresholds, Alerts and Notifications

Tracking state and local thresholds can be tricky. Encamp's Compliance Engine is constantly checking your facility's product data against thresholds. We check for state and local nuances, extremely hazardous substances, and have built in conversions for other units to keep your facility in compliance. If a threshold is crossed, Encamp lets you know.

This comprehensive year round view shows what products are on site and in what quantity. It also indicates what products are above threshold.

Chemicals / Overview

Kristen Salmon (KS) ?

Boxes Demo Org (change org)

OVERVIEW | REPORTS | INVENTORY | CHEMICAL CATALOG | PRODUCT CATALOG | CONTACTS | DOCUMENTS

Issues & Anomalies [EXPORT] View by Anomalies

Facility ↑	Chemical	Amount reported in 2023	Amount reported in 2024
A2Z Shipping	Diesel Fuel	50,000 lbs	6,500 lbs
A2Z Shipping	2,4'-Diphenylmethane Diisocyanate (...)	no data	10,000 lbs
A2Z Shipping	FREEFLOW MT-4857	no data	520,000 lbs
A2Z Shipping	Lead (Lead Acid Batteries)	2,400 lbs	12,400 lbs
A2Z Shipping	4,4'-Methylenediphenyl diisocyanate	no data	10,000 lbs
A2Z Shipping	1,1,1,3,3-Pentafluoropropane	100 lbs	no data
Alabaster AL, DGI	Diesel Fuel	100 lbs	no data
Alabaster AL, DGI	Sulfuric Acid (Lead Acid Batteries)	50,000 lbs	no data
Alabaster AL, DGI	BDF-454	5,000 lbs	no data
Alabaster AL, DGI	Acetone	100 lbs	no data

**2024 Reporting Summary for Gram Decolorizer** Above Threshold

Max Daily Amount <b>50,111 lbs</b> [08] 50,000-74,999	Avg Daily Amount <b>23,061.84 lbs</b> [06] 10,000-24,999	Products ..... 0 lbs Other Chemicals .... 50,111 lbs <b>Total ..... 50,111 lbs</b>	Largest Container ..... 25,000 lbs Days on Site ..... 366 days Last Year (2023) ..... 3,001 lbs
---	--	--	---

# HOW IT WORKS

## Phase 4

- ✓ Basic Information
- ✓ Regulatory
- ✓ Products
- ✓ Facility Contacts
- ✓ State Information
- Certify & Submit

### Certify & Submit

**Stacy Patterson will be certifying this report.**

Full name of Certifier

Title of Certifier

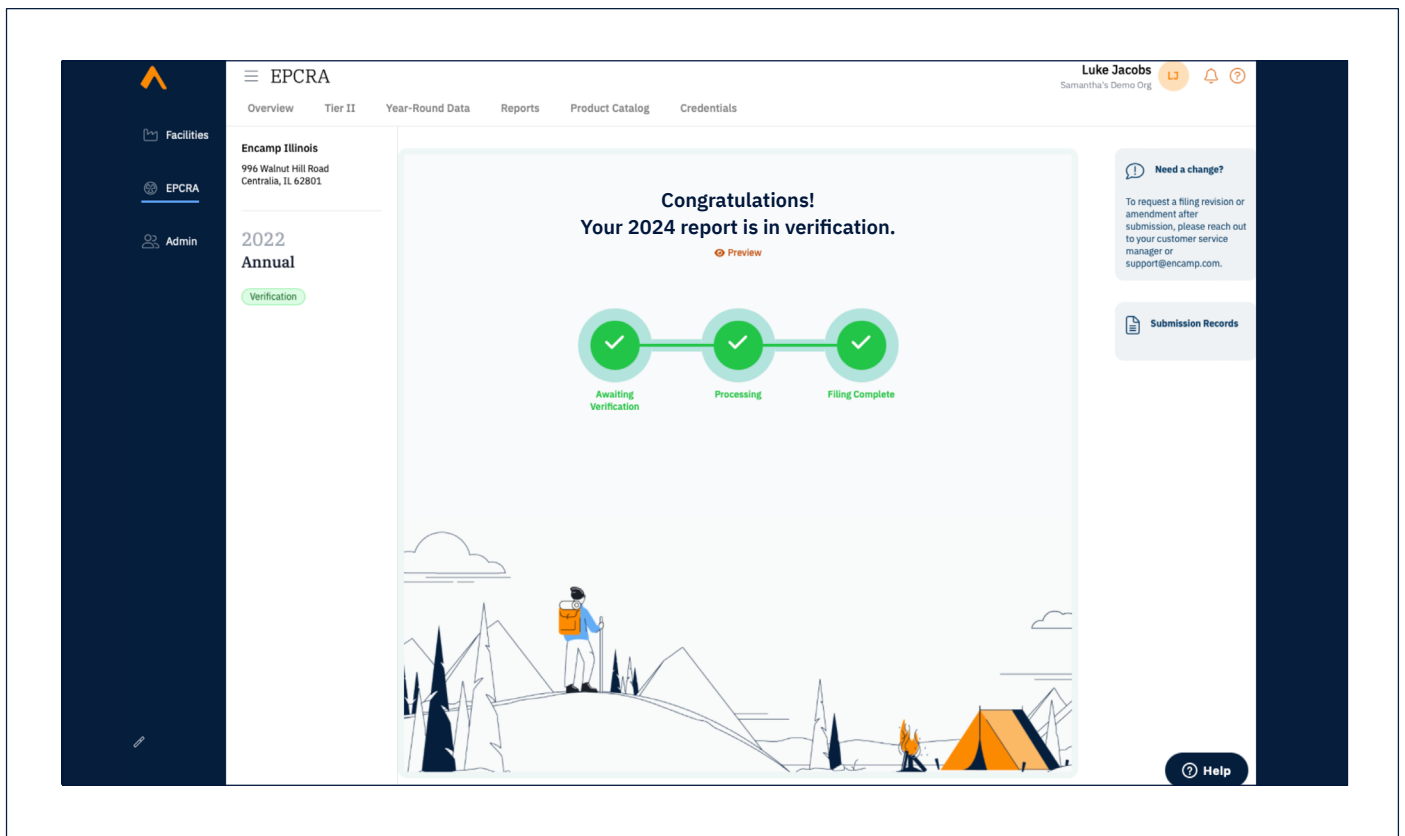
Date



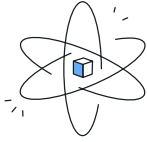
## Access Your Records Anywhere, Anytime

Once Encamp files your reports and pays your fees, we upload all applicable documentation to your Encamp account. Rest assured that you will be able to access your reports, receipts, invoices, and proof of mail, all in one place.

Once your report is verified in Encamp, you're all set! Our automation will handle paying fees and mailing reports to the appropriate agencies.



## One Platform, Endless Benefits



### Improved data visibility

Improve data visibility from operations to the C-suite with Encamp's chemical inventory tracker, eliminate ad-hoc data requests, back-and-forth email chains, and get your Tier II reporting done quicker and more efficiently.



### Streamline reporting with confidence

Electronically file Tier II reports directly from Encamp — no more time spend logging into multiple state reporting portals or managing multiple login credentials — and no more copy-paste reporting with our automated Tier II submission solution.



### Fee payment management

Simplify fee allocation to the correct cost center and utilize data for company growth and budget forecasting purposes by paying your filing fee directly through Encamp.

## The most innovative EHS teams are transforming their compliance programs with Encamp

# 47%

### Increase in data confidence

By accessing all the data in one single place.

# 60K+

### Hours saved annually

By automating report submissions, fee payments and more.

# \$MM

### Environmental risk protection

Can save millions of dollars in time savings and fines.

 **TopBuild**



 **Nutrien**

 **HEXION**

 **SOUTHERN STATES**

 **FirstEnergy**



*"We needed to transform from this very manual way that we were managing compliance into a more systematic, a data-driven compliance methodology."*

**Stephanie Sparkman,**  
Amazon



*"Your solution is unique in that it's the only one in the industry that can automate data collection and standardize it, while automating the reporting, submissions and fee payments. It's been a game-changer for us."*

**Mason Baziw,** Sr. Manager  
of ESG and Sustainability,  
TopBuild



*"I work with a lot of different kinds of vendors and consultants, but Encamp is in a league of its own with its quality and service."*

**Andrew Kavanaugh,**  
EHS Manager, World Group

Join them

Speak with an expert